

Designed with care - for people who care

DENMARK  
TEL +45 48 22 88 77  
sms@scanmodul.dk

AUSTRALIA  
TEL +61 (0) 3 6229 1439  
sales@healthspace.com.au

AUSTRIA  
TEL +49 74 61 9674 0  
info@orgasyst.de

BELGIUM  
TEL +32 3 457 67 67  
info.be@medi-math.com

CANADA  
TEL +1 450 628 8800  
info@logid.ca

CHILE  
TEL +56 2223 4304  
danimpo@netline.cl

FRANCE  
TEL +33 474 990 330  
info.fr@medi-math.com

GERMANY  
TEL +49 74 61 9674 0  
info@orgasyst.de

GREECE  
TEL +30 210 69 84 775 - 6  
info@alkyoni.gr

HONG KONG  
TEL +852 23 95 63 39  
vghk@netvigator.com

ICELAND  
TEL +354 569 3100  
eirberg@eirberg.is

IRELAND  
TEL +353 1 836 1333  
info@coffeyhealthcare.ie

ITALY  
TEL +39 0458 378 500  
info@biosp.it

ITALY (the Tyrol)  
TEL +49 74 61 9674 0  
info@orgasyst.de

JAPAN  
TEL +81 93 963 8334  
r-fukuyama@central-uni.co.jp

NETHERLANDS  
TEL +31 306 345 345  
info.nl@medi-math.com

NORWAY  
TEL +47 22 63 01 68  
ordrepost@byrumlabflex.com

POLAND  
TEL +49 74 61 9674 0  
info@orgasyst.de

PORTUGAL  
TEL +351 21 916 76 58  
info.pt@medi-math.com

SWITZERLAND  
TEL +41 61 301 63 01  
scanmodul@freesurf.ch

SPAIN  
TEL +34 93 244 00 40  
info.es@medi-math.com

SWEDEN  
TEL +46 8 702 99 10  
tore.normann@mbx300.swipnet.se

UNITED KINGDOM  
TEL +44 870 770 8777  
mail@scanmodulsystem.co.uk

U.S.A.  
TEL +1 631 273 8890  
info@scanmodul.com



Consulting



Storage



Software



Services



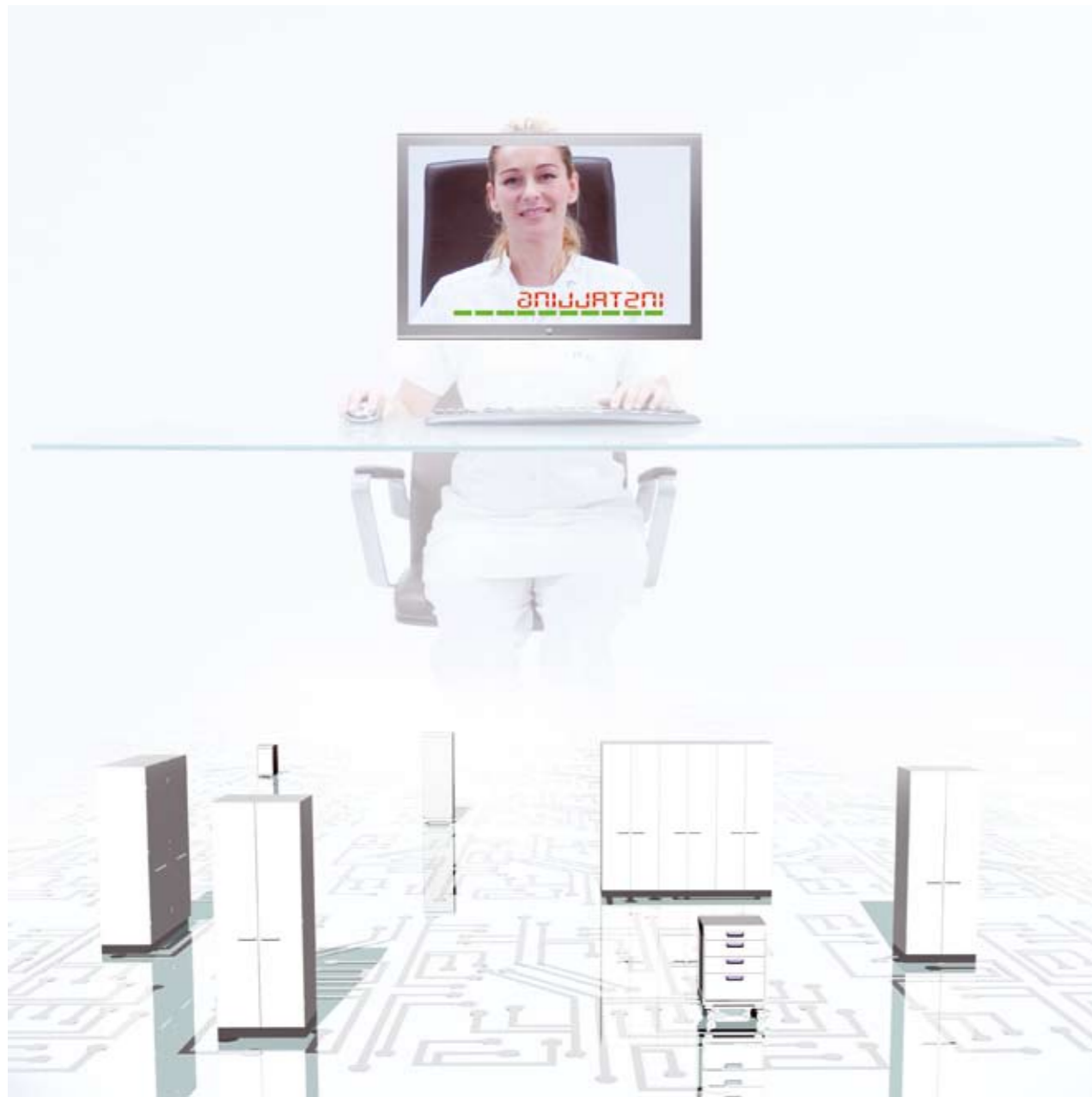
Training

# Software

A general introduction

# Scan Modul Data System (SMDS)

“ Quick to implement, easy to use and simple to maintain



SMDS is developed by Scan Modul System and draws on our solid competences within the health-care sector. The result is a unique software application for handling and controlling differentiated material flows. The software consists of several modules that work either separately or integrated with one another. As a result not only are current requirements fulfilled, but this can be expanded in the future according to changes in demands and needs.

The SMDS solution smoothes the path for a rational planning of the health institutions core business, where the actual needs form the basis of supply plans for items and services. Active control of the demand chain (Demand Chain Management) is fundamental for an efficient supply business (Supply Chain Management). By using the SMDS as your logistical support application you are guaranteed full control over and audit of supplies from vendors to the individual department, patient or treatment.

# Software Modules



The **Supply module** manages the internal supply chain, it ensures that internal supply departments focus wholly and effectively on the hospital's core business. By coupling supply as part of the "treatment chain" patient care will be improved. The goal of having the right item, in the right quantity, at the right place, at the right time will be realized.



The **Patient module** guarantees the documentation of consumption of items and services during the treatment of individual patients. With this module it is easy to calculate and analyse the cost of different treatments. It is a user-friendly module, which takes the preparation of patient treatment into consideration. As a result it fits naturally into the daily working environment of nurses.



The **OR/Case module** makes it easy to plan future operations, print packing lists and register extra consumption during an operation. The exact price of an operation can be calculated and the module provides you with the opportunity to follow up on economical as well as clinical objectives.



The **Inventory module** offers comprehensive options for controlling the inventory across the entire organization. The module makes it possible to track data of deliveries and purchases on a daily basis. The module can be fully integrated with other modules thus providing comprehensive options for controlling inventory and minimizing stock.



The **Purchase module** gives you features that enable total control of purchasing. The module optimizes supply flow to the departments by having the right items for the inventory at the right time.



The **Tender module** (Bid module) is a superstructure of the Purchase module. It is an effective tool for the professional purchasers used for creating tenders, evaluating offers from vendors and for implementing and follow up on contracts.



The **Invoice Control** module is a substructure of the Purchase module and gives the individual invoice controller a detailed overview for approving vendor invoices. The module contains functions that recognize vendor invoices to the payment systems.

# Get a head start with Scan Modul Data System

## Flexibility

A solution built for future development and tailored to meet the needs of your organization.

## Optimisation

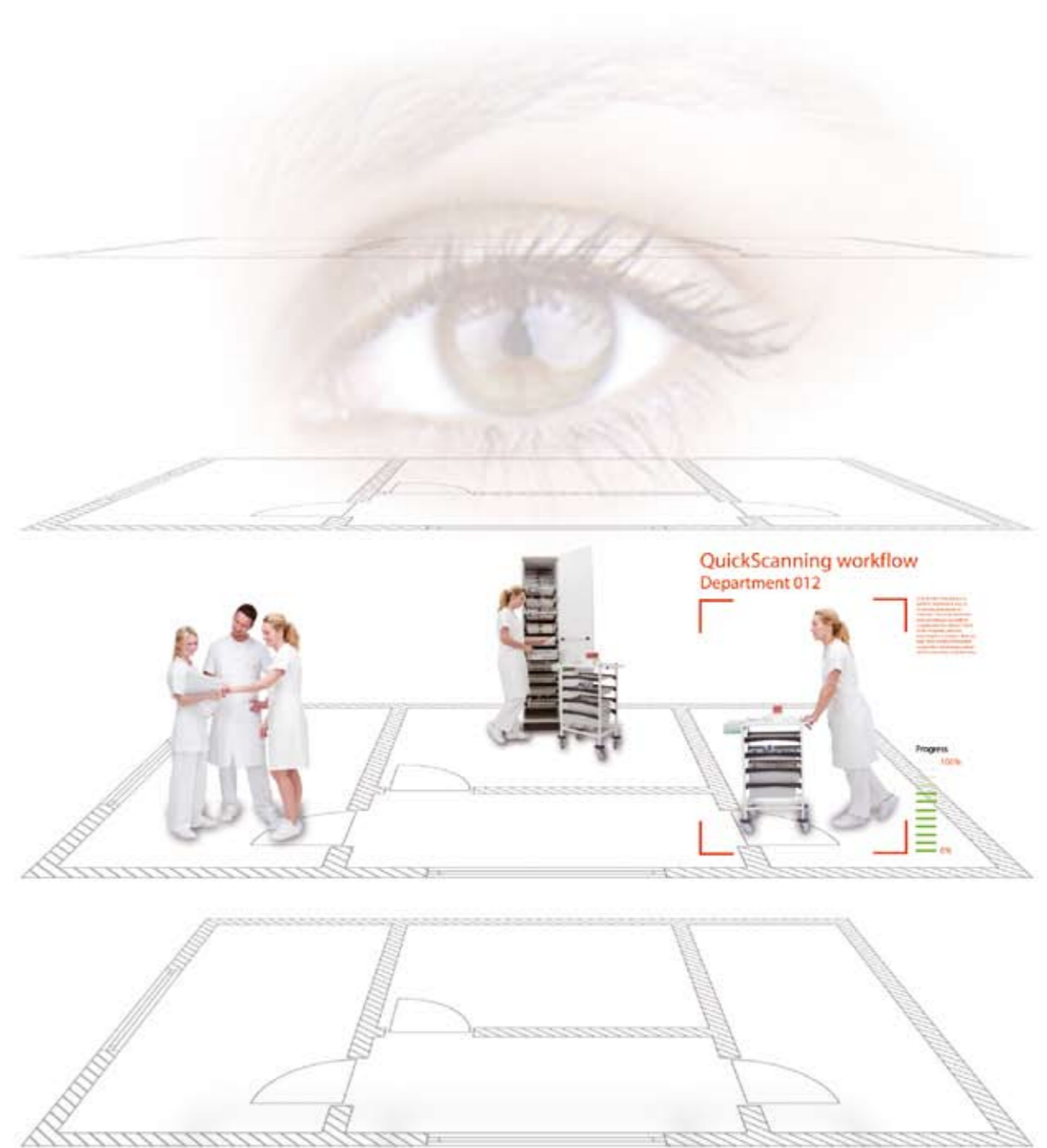
Tools that increase individual performances and lift the organization as a whole, enabling it to set new records.

- *Easy data capture*
- *Ensures quality information through the supply chain*
- *Real-time overview of stock levels*
- *Usefull statistics*
- *Cost information of consumption*
- *Time reduction on replenishment*
- *Standardization of processes and procedures*



# IT system analysis

“ A good solution is based on good consultancy

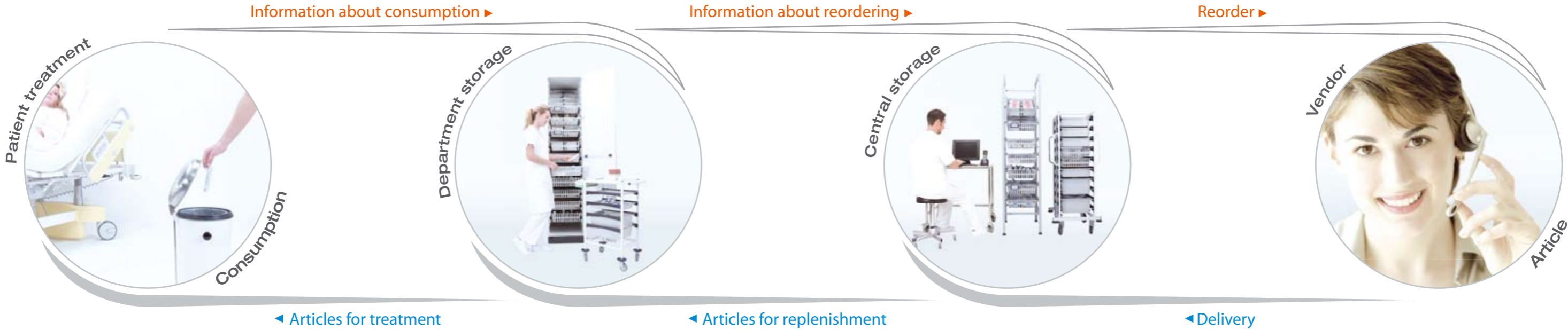


Being a supplier of logistical software solutions for the healthcare business for many years has provided us with the right tools for analysing and understanding the demands and needs of clients. Therefore we can ensure a successful implementation, regardless of whether the solution is based on a standard application – i.e. the *Scan Modul Data System* – or requires further customization.

On the basis of the IT system analysis we generate a report detailing the actual logistical software and the new possibilities and benefits to be achieved from implementing additional software.

# The supply chain

“ Full IT integration ensures you:  
 The right item  
 In the right quantity  
 At the right place  
 At the right time



If consumption should be linked to a single patient, treatment or operation we offer the **Patient module** or the **OR/Case module**.

The **supply module** is our basic module, controlling the internal supply chain between central storage and the department stores.

The **Inventory module** draws a real time picture of the overall stock situation. By integration with the **Purchase module** a complete control of purchases is ensured.

Connect the **Tender module** (Bid module) for a brilliant overview of bids, offers and contracts. Finally the **invoice module** ensures optimized control of invoices.

# Application overview