

Logistical systems and products for hospital materials management



OR MANAGEMENT



HEALTHSPACE PTY LTD
PO BOX 125
KINGSTON 7051
TASMANIA - AUSTRALIA
TEL +61 (0) 3 6229 1009
FAX +61 (0) 3 6229 2407
E-MAIL kevin.page@healthspace.com.au
www.htrak.com

OR Management



The first step is to plan all items, instruments and etc. required for a specific operation. The creation of procedure cards and/or preference cards enables such planning. The cards can be assigned to a certain surgeon for each type of operation.



To schedule an operation you simply copy the procedure/preference card. You can also insert the surgeons name and the system will display a list of preference cards link to the chosen surgeon. The status in the system is then set to 'scheduled operation'.



To pack the case cart for an operation a picking list is printed - and items are picked accordingly. The list will provide you with exact information of the storage location of these items. After the case cart is packed the status is set to 'operation case packed'. The system will then reduce the picked items from stock and charge them to the patient.



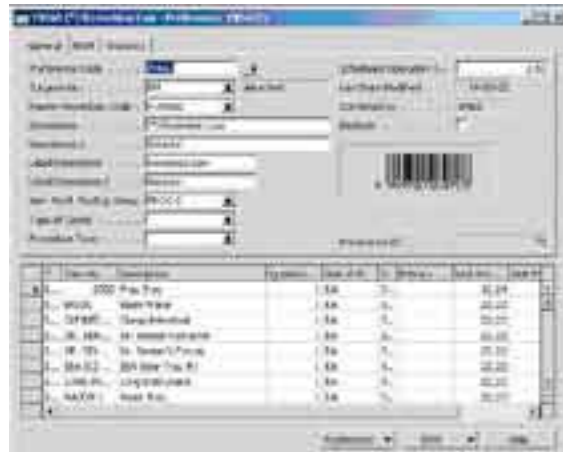
Before an operation begins a registration of the start-time and status - 'operation in progress' - is required. When the operation is completed the completion time is keyed in and the status set to 'final approval'.



The case cart is then checked and items, instruments and etc. not consumed/ used are noted and credited to the patient. Simultaneously, these items are posted back to stock and the inventory adjusted. Finally, the status is set to 'operation closed'.



Data obtained from the operations is stored in the database. Surgeon teams are then able to retrieve these data for evaluation/ benchmarking purposes for a given operation - e.g. time spent, costings, type of items consumed and the comparison of items.



The creation of a procedure/ preference card requires you to key-in all information of items, instruments, equipments and etc. used during a given operation. In addition to this you can add relevant remarks and other information to the card.

The system will calculate the total price of all items required and sort them in product groups.



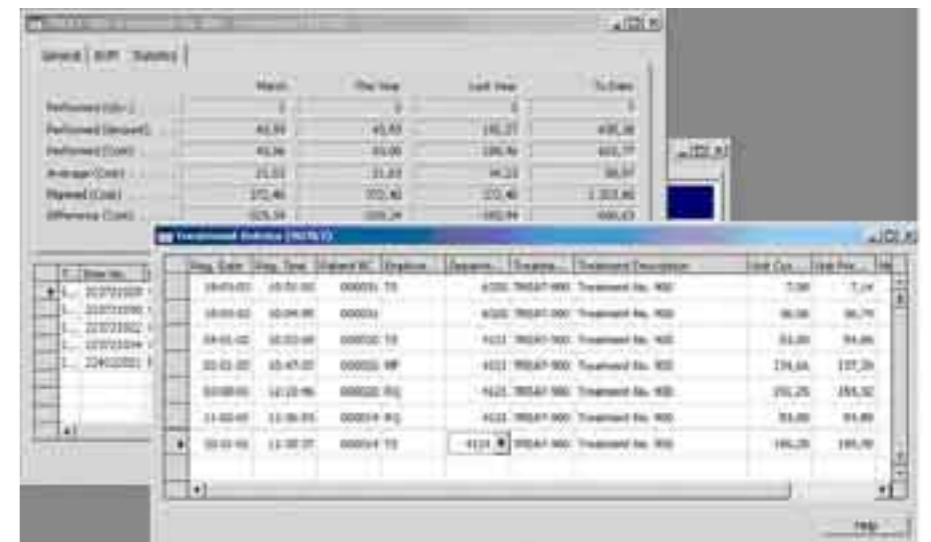
The picking list shows the information not only in print but also as barcodes for easy data collection. As such registration can also take place by use of a handheld scanner.



The SMDS can operate by use of handheld scanner and/or keyboard.



The use of a touch screen and radio-key (keyboard scanner) is also a possibility.



The database contains information for statistical use. Above - you see a window displaying information of the operations performed and the actual price in comparison with initial costings.

The window also displays, individually, specific operation cases with various information of e.g. date and time, surgeon-BC and department-BC.

A scheduled operation can always be deleted. In this case, the items in the case cart are returned to stock and the inventory adjusted. Furthermore, if scheduled operations are postponed the case cart items are either returned to stock or kept in the carts.