



Scan Modul Data System is a cost-effective and integrated business solution, which supplies hospitals with a faster way to realize full potential of their core business.

Scan Modul Data System is quick to implement, easy to customize and simple to maintain. The programme has been developed specially to comply with the unique needs of the hospitals, who are searching for a solution that can help them achieve immediate competitive advantages, adjust and increase their business area.

Scan Modul Data System gives the hospitals opportunity for a rational planning of their core business, where the actual needs form the basis of supply plans for items and services. Active control of the demand chain (Demand Chain Management) is fundamental for a rational supply business (Supply Chain Management). Using Scan Modul Data System as a logistical support application gives full control over and audit of supplies from the vendors to the individual department/operation department or patient.

Scan Modul Data System enables organisations to stream line internal and external business processes, in order to make the organization work closer and more effective with customers, partners and vendors. The staff has access to endless flow of real-time information and many possibilities for exchanging information internally across the organisation or externally.

Scan Modul Data System programme package consists of the following application modules:



SMDS Purchase contains in-depth information on vendors and has features that enable total control of purchasing in a hectic hospital environment. The module optimises customer support and liquidity by having the right items as inventory at the right time.

SMDS Tender is a superstructure of the Purchase module, It is an effective tool used by the professional purchaser to devise tenders, evaluate offers from vendors and to implement and follow up on contracts.



SMDS Inventory offers comprehensive options for controlling the inventory across the entire organization. The module can be fully integrated with other modules thus providing extensive possibilities for controlling inventory and minimizing stock – all without compromising customer service.



SMDS Supply assist with the implementation of an overall supply-strategy within a hospital. It ensures that internal supply organizations focus wholly and effectively on the hospital's core business. By coupling supply to the 'treatment-chain' patient care will be improved.

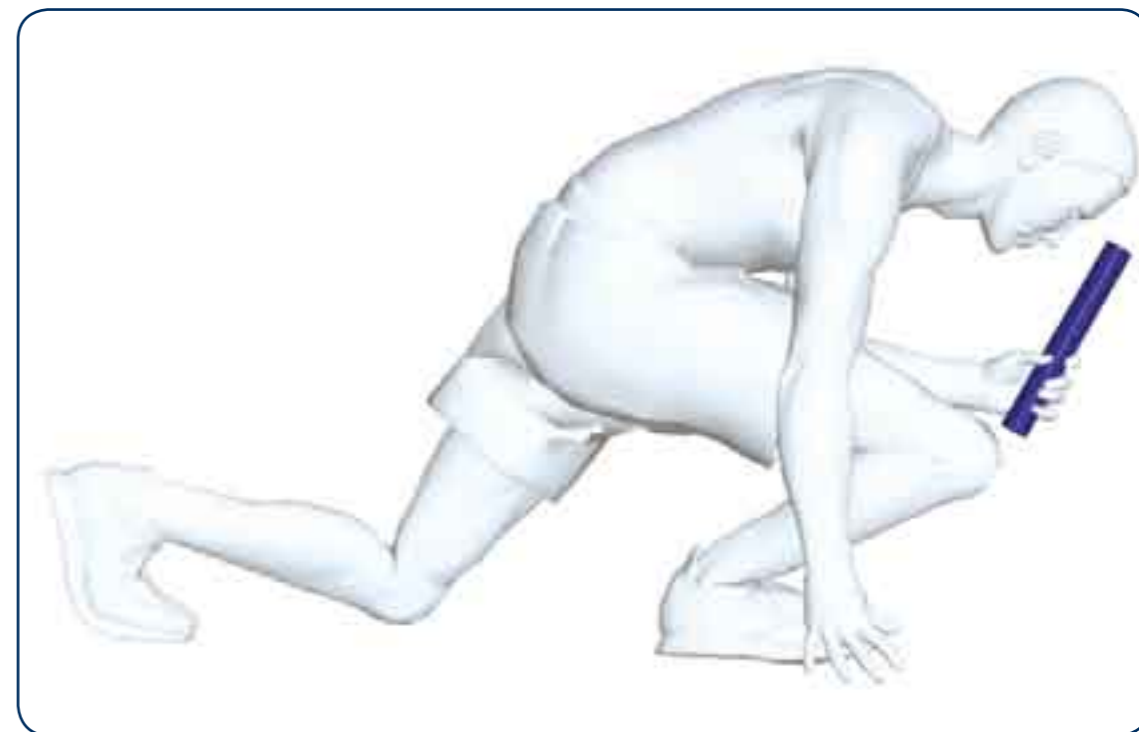


SMDS Patient is a module developed for documenting the consumption of items and services during the treatment of individual patients. The module can be used in environments, where complete and detailed documentation of items and services, utilised for the treatment of patients is required.

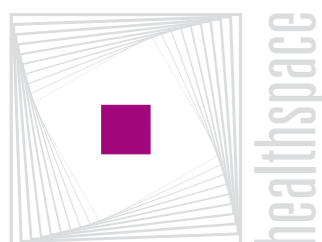
SMDS OR Management is a module developed to ensure the quality and security of productions in the operating theatres. The module provides us with the opportunity to monitor the financial as well as the clinical objectives.



SMDS Invoice Control is a superstructure of the Purchase module and gives the individual invoice controller a detailed overview for approving vendor invoices. The module contains functionalities that transfer approved invoices from vendors to external payment systems.



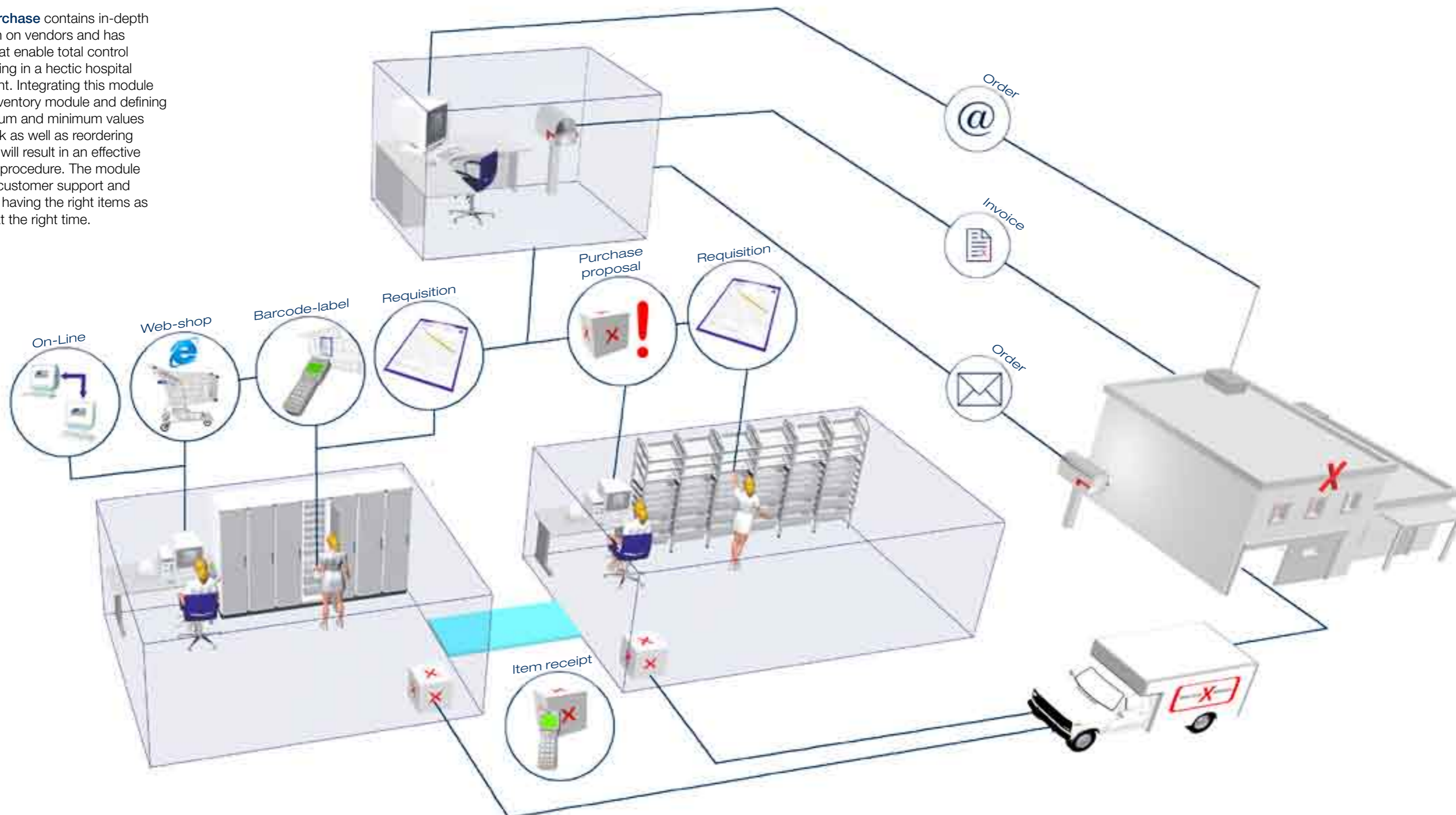
PURCHASE



HEALTHSPACE PTY LTD
 PO BOX 125
 KINGSTON 7051
 TASMANIA - AUSTRALIA
 TEL +61 (0) 3 6229 1009
 FAX +61 (0) 3 6229 2407
 E-MAIL kevin.page@healthspace.com.au
 www.htrak.com

Purchase

SMDS Purchase contains in-depth information on vendors and has features that enable total control of purchasing in a hectic hospital environment. Integrating this module with the Inventory module and defining the maximum and minimum values of the stock as well as reordering quantities, will result in an effective reordering procedure. The module optimises customer support and liquidity by having the right items as inventory at the right time.



The Departments
can order standard and requisition items through the purchase department, by scanning bar code for items stored in modular cupboards, by logging on-line to Scan Modul Data System and place an order via a requisition journal, through browser technology or by filling out an order form.

The Supply Departments
can order stock items by using the purchase journal. The programme automatically calculates a proposal for items that have to be reordered on the basis of the reordering points, which are defined individually for each item. When the journal has been approved the icon "Create Orders" is activated and the orders are automatically confirmed to the purchase department.

The Purchase Department
is responsible for the approval of registered orders from user departments and supply departments. The Purchase Authorization functionality in the programme ensures that only authorized orders are released to the vendors. The distribution of these orders can take place either by print or email.

Item Receipt
in the central stores can take place either manually or by electronic scanning of a barcode for the items that are received. The available stock is automatically updated in the programme and the purchaser can continuously keep track on open purchase orders.

Invoice Approval
takes place by matching the vendor invoice with the original order. The preceding item receipt confirms the number of approved items that have been posted in the programme and if this matches with the number on the invoice and price the purchase order is posted.

Data for Decision-making
can be based on a number of reports, which contain surveys and documentation of posted transactions, purchase statistics and documentation, items on orders, vendor/item statistics etc.